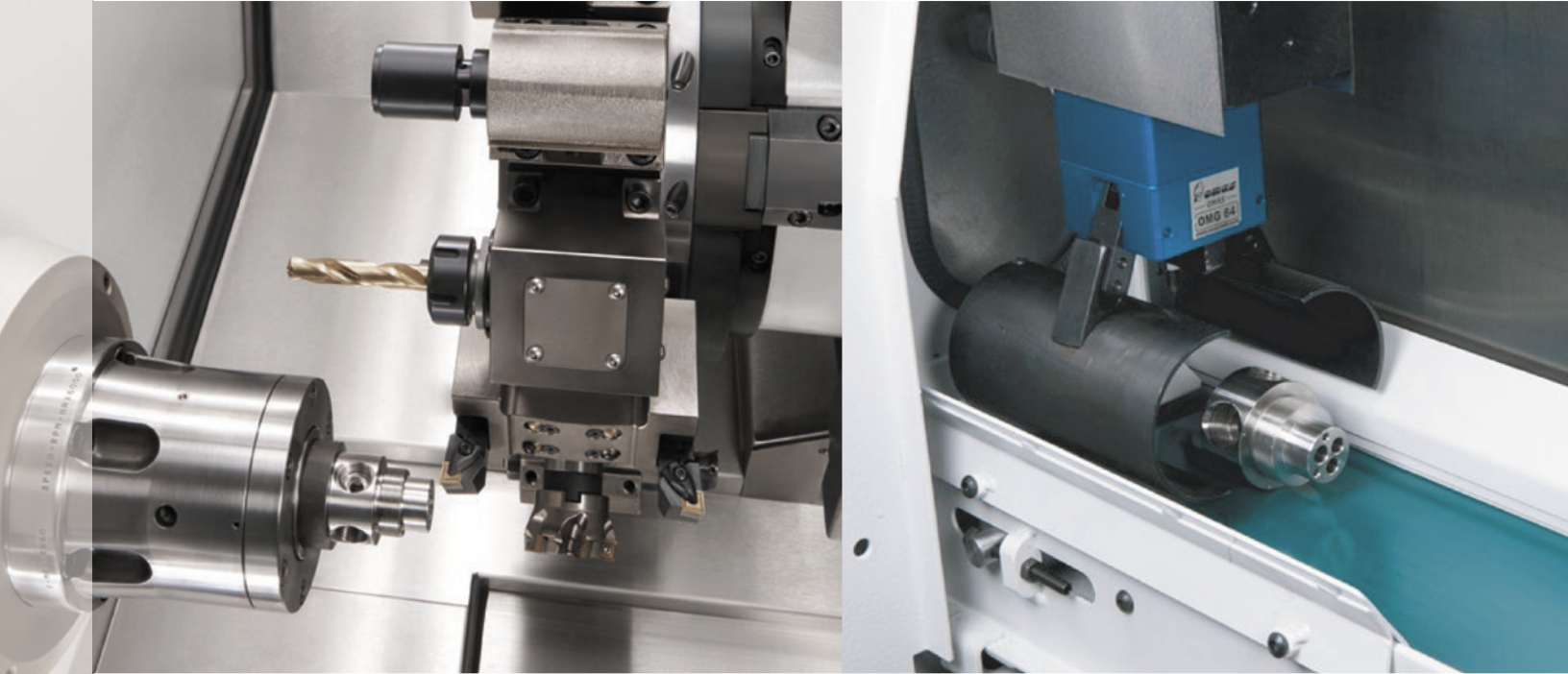


The New ULTIMA B620 SLY Series 34 Horsepower 51 mm or 54 Horsepower 71mm, 18 Horsepower Live Tools

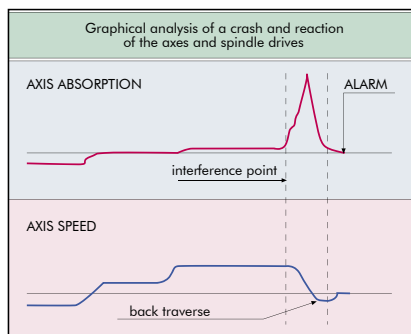
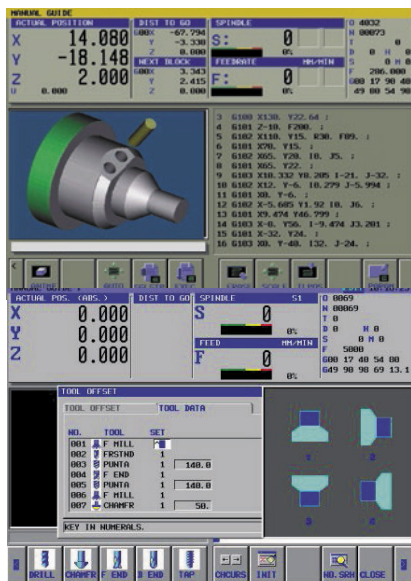


- Eurotech's Gap Elimination Software Delivers Faster Cycle Times
- Eurotech Programmable Parts Evacuation System Delivers Increased Throughput
- Stronger Horsepower, 54 / 34 / 18, for ample Cutting Capability
- Up to 120 tools with EGS Tooling Saves Tool Change Time and Allows Redundant Tooling
- One Piece Casting and Boxways for Higher Rigidity



The Ultimate Multi-Axis Bar Machine

ULTIMA Automated Process.



Approximate diagram

Eurotech | Fanuc EASY CNC

The innovative software package provides operators with access to a very simple and userfriendly graphics interface, strong "editing" functions and offers a wide selection of machining cycles (turning, milling and drilling). This system allows the execution of even the most complex programs with ease of operation. The 3D simulation facilitates the checking of programs before machining operations (option).

DAMAGE PROTECTION (AIR BAG)

This special software detects the abnormal load created by a collision. When a collision occurs, spindle rotation is stopped and the axis movement is halted thus damping the interference and limiting damage to the tooling.

ULTIMA CNC UNIT

CNC Fanuc | Eurotech EASY CNC:

- 15" color liquid crystal display
- Alphanumeric full-keyboard
- Eurotech operator panel featuring softkeys
- Data transmission: Ethernet gate, memory card, USB, RS 232 port.

TOOL-LIFE MANAGEMENT									
TOOL LIFE ON									
OFFSET ON									
T	GRP	WORKED	NUMBER	TOOL	TOOL	OFFSET	NUMBER	OFFSET	
1	2	PARIS	PARIS	STATE	U	W	OFFSET		
1	1	12	30		0.001		5		
2	2	10	10	OFF	0.001		4		
3	3	2	10		0.001		4		
4	4	1	30		0.001		5		
5	5	12	15		0.001		5		
6	6	4	30						
9	9	3	15						
8									
10									
11									
12									

SBS: TOOL LOAD MONITORING

This system monitors the loading of the most heavily used tools such as cutting tools, roughening tools, drills or U-drills. It ensures safe automatic machining with limited operator presence.



Live
or Static
Eurotech
EGS Tooling

NEW EUROTECH SERVO-TURRET

Fast and rigid Eurotech 15-station servo-turret. With Eurotech EGS tooling multiple live or static tools can be used on every station (up to 120 tools capacity). The rotary tools are driven by a liquid cooled, synchronous built-in motor with 18HP power and speed range of 6000 rpm. The rotary motion is transmitted by a built-in motor, lubricated and cooled by oil mist.

"With Eurotech many parts went from 7 ops to 1 op! We not only reduced our operations, but we inspect a complete part 1 time, instead of a partial part 7 times....Eurotech has gone above and beyond the call of duty. We are extremely pleased with the Eurotech product and team." - **Ken Sutton, Fabco-Air**

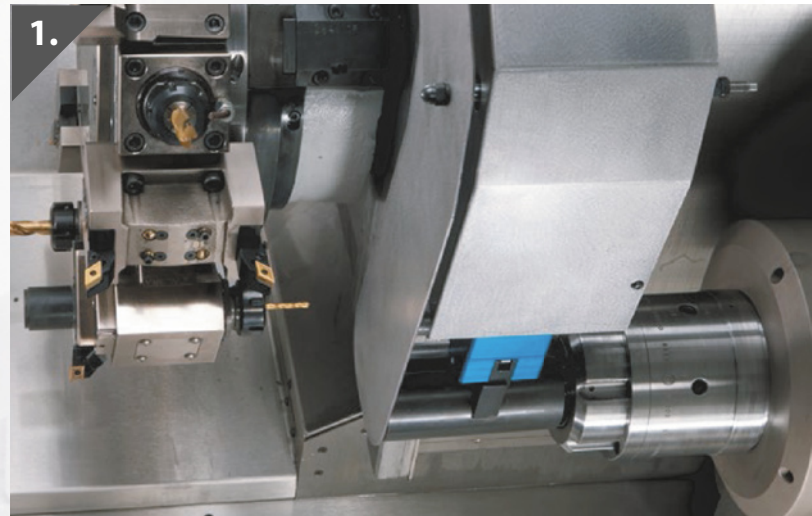
UNLOADING SEQUENCE OF THE GANTRY SYSTEM

1. Pick-up of finished part
2. Unloading on to the primary parts conveyor
3. Collection of finished part on the secondary parts conveyor

Increase Throughput and Your Productivity

ULTIMA PARTS EVACUATION SYSTEM

The new parts evacuation system takes the finished part from the sub-spindle and unloads it directly onto a parts conveyor that passes the part to a secondary part conveyor to eliminate part damage and parts jamming...significantly increasing throughput.



Eurotech ULTIMA B620 SLY - 34HP Eurotech ULTIMA B620 SLY - 54HP

Standard Equipment includes:

- Eurotech-Fanuc EASY Plus Control, 15" LCD color touch screen and full keyboard
- 15 stations turret with driven tools, up to 120 tool capacity
- "C" axis with brake on both main and sub-spindle
- True Y-axis on solid box ways
- ASA 5" sub-spindle (built-in) with pneumatic ejector (100mm stroke), coolant through
- Programmable parts gantry system with dual conveyors
- Chip conveyor with 3.5 bar wash-down coolant pump + 7 bar coolant pump for the turret
- Bar feeder interface
- Automatic tool pre-setter
- SBS tool monitoring system combined with tool life and wear management
- Polygon turning on main spindle
- Damage protection software (airbag)
- Eurotech gap elimination software
- Coolant + air thru sub-spindle
- Pneumatic parts ejector on sub-spindle (100 mm stroke)
- Free tooling package including static/live
- Eurotech custom macros
- Rotary glass scales on main and sub-spindle

Options:

- Royal QG collet system on main & sub... price on request (in lieu of standard double cone collet system)
- Long shaft work system price on request
- High pressure coolant system price on request

ULTIMA B620 SLY 34/54 HP

Specifications

Bar capacity..... 2.00" / 2.75"
Max mach. dia.....12.60"

Main spindle

Max speed.. 5000/4500 RPM
Spindle nose..... ASA 6"
Max chuck dia..... 8"
Motor power (hp)..... 34/54

Sub Spindle

Max Speed.....5000 RPM
Spindle nose..... ASA 5"
Chuck dia..... 6" / 8"
Motor power..... 34 hp

Turret

Max # of tools..... 120
No of stations..... 15

Live Tooling

Max # of live tools..... 60
Max speed std..... 6,000 RPM
Max speed opt...60,000 RPM
HP (30 minute) 18

Axes

X-axis stroke..... 8.07"
Z-axis stroke..... 24.4"
Y-axis stroke..... +1.77 /-1.77"
B-axis stroke..... 24.4"
C-axis minimum
program value..... 001"

Dimensions & Weight

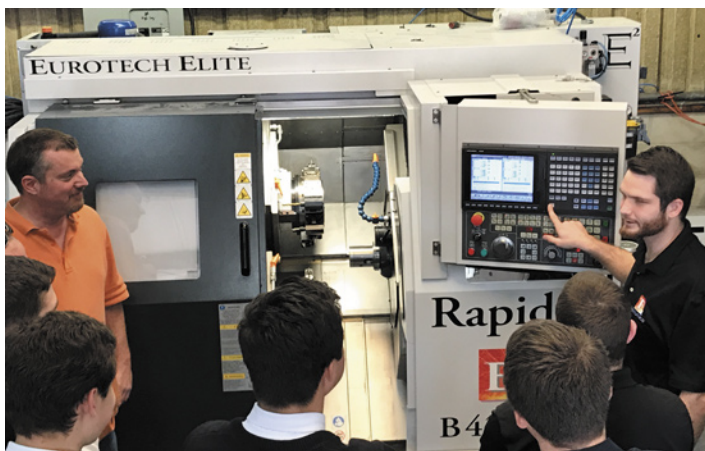
Dim.....172" w x 75" d x 79" h
(with chip conveyor)
Weight..... 11,300 lbs

"The Eurotech is so much faster than the competition that its speed difference alone completely pays for the machine."

- Tom Hassett, Owner of T & L Automatics

"I can't say enough about our (5) Eurotech machine's! These machines are great, not to mention dependable. Our relationship with the service department is bar none!"

- Les Richards, Custom Mold



Eurotech Free Lifetime Programming Classes



Eurotech Engineering Solutions and Free Technical Webinars



EUROTECH
1150 Ponce de Leon Blvd.
Brooksville, Florida 34601

tele: 352.799.5223 fax: 352.799.4662
email: sales@eurotechelite.com
web: www.eurotechelite.com