



HIGH PERFORMANCE LIVE CENTRES



***SPECIAL
INTRODUCTORY
PRICING***

NEW PRODUCT



PRECISION

QUALITY

PERFORMANCE



As a leading manufacturer of high quality Rotary Tooling and Machine Vises GS Tooling is known for providing the best quality to our customers.

Each GS Live Centre is of the highest quality and manufactured to the industry's tightest specifications. All this and still priced 40-50% below the leading brand names.

FEATURES

■ Each GS Live Centre uses either a 3, 4, or the incredible 5-bearing system. Each bearing system has been individually and specifically designed for the applications in which that live centre is meant to be used. This specificity of design provides superior performance and tool life across the entire GS line of centres.

■ An additional special coating process is applied to the lip seal contact area. This coating offers a higher sealing ability and reduces rotational friction, both contributing to longer tool life.

■ If roller bearings are used at high temperatures, the hardness of the bearing steel decreases. Consequently the basic load rating, which depends on the physical properties of the material, also decreases. GS Live Centres are designed to prevent excessive heat. Live centre temperatures are controlled even when rotating at maximum RPM.

■ Every single centre has passed at least 4 different accuracy tests to ensure our customers the highest quality available in the market today.

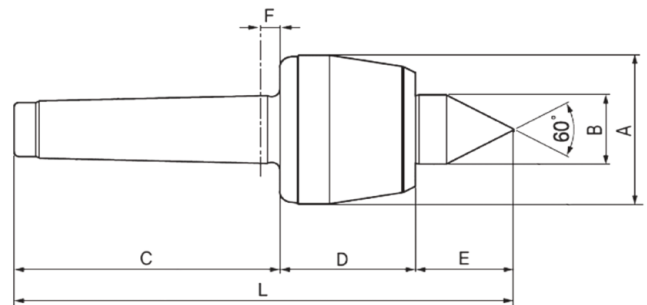
GS Tooling is committed to delivering outstanding value to our customers.

In fact we are so confident with the quality and performance of these live centres that we are offering a **30-day money back guarantee against manufacturers defects.**

CNC HIGH SPEED LIVE CENTRE - STANDARD POINT

FEATURES

- Accuracy guaranteed to 0.003mm TIR (0.0001")
- Excellent for CNC and conventional machines
- Heat treated point to HRC 60±2
- High performance lip seal and deflected shaft design protects bearing space from ingress by dust and coolant
- Quad Bearing System: a double row angular contact bearing, a radial ball bearing, and a rear needle roller bearing combine to provide excellent rigidity and high precision point concentricity
- Heat treated drop-forged body (HRC 50±2) for extra strength, rigidity, and long life
- Shaft borehole for easy dismounting



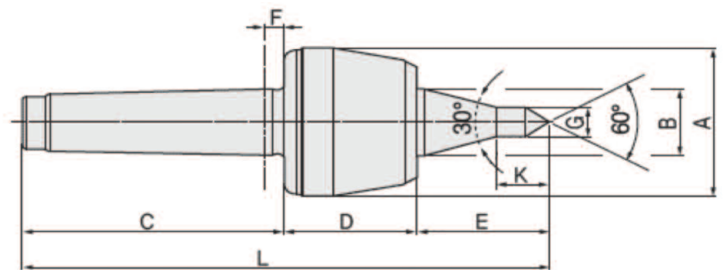
DIMENSIONS

MT	A (mm)	B (mm)	C (mm)	D (mm)	E (mm)	F (mm)	L (mm)	Workpiece Weight	Max RPM	Weight	Max Runout	Code No.	List \$	SALE \$
2	50	25	68	43.5	29.5	6	141	500 kg	5,000	0.7 kg	0.003mm	311-011	588.60	412.02
3	50	25	85	43.5	29.5	6	158	500 kg	5,000	0.8 kg	0.003mm	311-012	588.60	412.02
4	69	32	108	55	40	8	203	800 kg	3,800	1.85 kg	0.003mm	311-013	766.40	536.48
5	88	40	136	70	50.5	8	256.3	2,000 kg	3,000	4.2 kg	0.003mm	311-014	1,056.20	739.34

CNC HIGH SPEED LIVE CENTRE - EXTENDED A TYPE POINT

FEATURES

- Accuracy guaranteed to 0.003mm TIR (0.0001")
- Excellent for CNC and conventional machines
- Specially shaped elongated centre point improves tool clearance and machining flexibility for cramped area work
- Heat treated point to HRC 60±2
- High performance lip seal and deflected shaft design protects bearing space from ingress by dust and coolant
- Quad Bearing System: a double row angular contact bearing, a radial ball bearing, and a rear needle roller bearing combine to provide excellent rigidity and high precision point concentricity
- Heat treated body for extra strength, rigidity, and long life



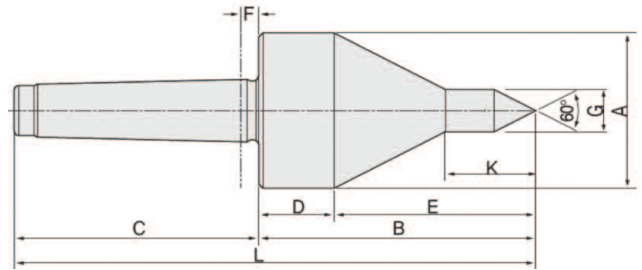
DIMENSIONS

MT	A (mm)	B (mm)	C (mm)	D (mm)	E (mm)	F (mm)	G (mm)	K (mm)	L (mm)	Workpiece Weight	Max RPM	Weight	Max Runout	Code No.	List \$	SALE \$
2	50	25	68	43.5	50	6	10	19	161.5	500 kg	5,000	0.7 kg	0.003mm	311-016	619.00	433.30
3	50	25	85	43.5	50	6	10	19	178.5	500 kg	5,000	0.8 kg	0.003mm	311-017	619.00	433.30
4	69	32	108	55	63.5	8	12.5	23.5	226.5	550 kg	3,800	1.9 kg	0.003mm	311-018	778.20	544.74
5	88	40	136	70	80	8	12.5	23.5	286	1,500 kg	3,000	4.4 kg	0.003mm	311-019	1,056.20	739.34

60° BULL HEAD LIVE CENTRE - EXTENDED A TYPE POINT

FEATURES

- Accuracy guaranteed to 0.003mm TIR (0.0001")
- Heat treated point to HRC 60±2
- For pipe work, tube work, and parts with extra-large centre holes
- Quad Bearing System: double row angular contact bearing, thrust ball bearing, and a radial ball bearing combine to provide excellent rigidity and high precision point concentricity
- Used both as a centering taper for hollow bodies and as a centre for machining standard workpieces
- Elongated centre point is specially shaped for improved tool clearance



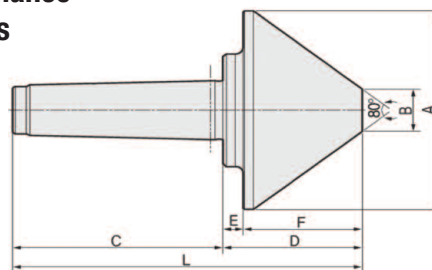
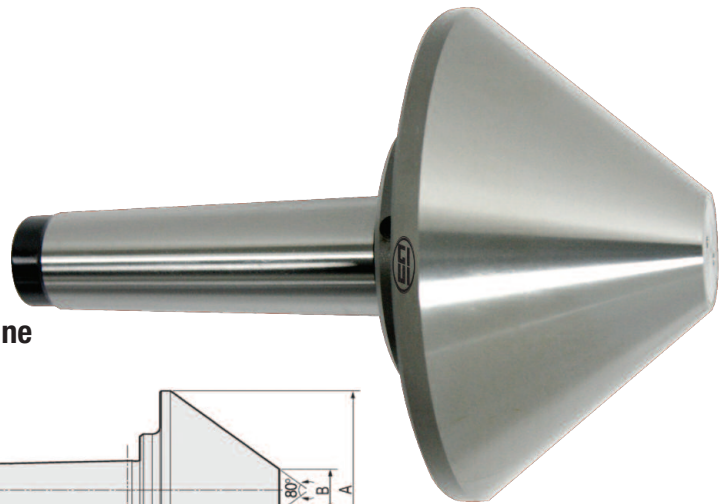
DIMENSIONS

MT	A (mm)	B (mm)	C (mm)	D (mm)	E (mm)	F (mm)	G (mm)	K (mm)	L (mm)	Workpiece Weight	Max RPM	Weight	Max Runout	Code No.	List \$	SALE \$
3	56	86	85	28.9	57.1	6	12	19	171	320 kg	5,000	1.0 kg	0.003mm	311-032	461.80	323.26
4	78	103.5	108	26.3	77.2	8	16	23.5	211.5	560 kg	3,800	2.3 kg	0.003mm	311-023	536.50	375.55
5	96	140	136	41.6	98.4	8	19	30	276	1,200 kg	3,000	5.0 kg	0.003mm	311-033	766.40	536.48

80° BULL NOSE LIVE CENTRE - STANDARD POINT

FEATURES

- Accuracy guaranteed to 0.003mm TIR (0.0001")
- Excellent for heavy duty lathe applications
- Heat treated point to HRC 60±2
- For pipe work, tube work, and part with extra-large centre holes
- Triple Bearing System: a taper roller bearing, thrust bearing, and a high-precision radial ball bearing combine to provide excellent rigidity and superior performance
- The design prevents ingress of coolant and chips
- Shaft borehole for easy, efficient dismounting
- Drop forged shaft (HRC50±2)



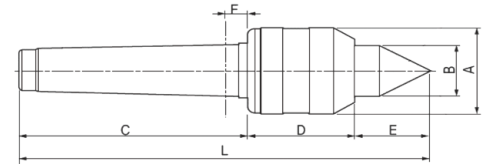
DIMENSIONS

MT	A (mm)	B (mm)	C (mm)	D (mm)	E (mm)	F (mm)	L (mm)	Workpiece Weight	Max RPM	Weight	Max Runout	Code No.	List \$	SALE \$
4	125	29	108	77	13	64	185	800 kg	3,000	3.9 kg	0.003mm	311-036	1,078.80	755.16
5	150	32	136	90	13	77	226	1,600 kg	2,000	6.9 kg	0.003mm	311-035	1,078.80	755.16

VALUE-TURN LIVE CENTRE

FEATURES

- Accuracy guaranteed to 0.003mm TIR (0.0001")
- Excellent for light/medium duty work on conventional lathe machines
- Heat treated point to HRC 60±2
- Slim diameter improves tool clearance
- Triple Bearing System: 2 radial ball bearings and a thrust bearing provide good overall load ratings and improved performance
- Rear bearing is sealed, protecting the assembly from coolant and chips
- Live center made of wear-resistant, drop-forged tool steel



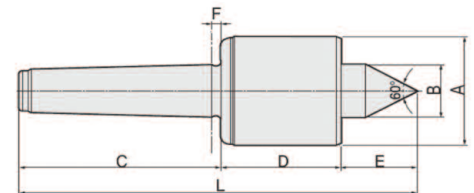
DIMENSIONS

MT	A (mm)	B (mm)	C (mm)	D (mm)	E (mm)	F (mm)	L (mm)	Workpiece Weight	Max Axial Load	Max RPM	Weight	Max Runout	Code No.	List \$	SALE \$
5	63	28	136	58	35	6.3	229	500 kg	750 kg	4,000	2.8 kg	0.003mm	311-031	416.60	291.62

HIGH SPEED LIVE CENTRE

FEATURES

- Accuracy guaranteed to 0.002mm TIR (0.0001")
- Excellent for grinders and CNC machines
- Heat treated point to HRC 60±2
- High RPM (up to 6,000)
- Five Bearing System: A double row angular contact bearing, two single row angular contact bearings, and a rear needle roller bearing combine to provide improved runout, greater stability, longer tool life, and superior performance
- Anti-friction seal for coolant deflection and high speed
- Heat treated body for extra strength, rigidity, and long life
- Shaft borehole for easy, efficient dismounting
- Drop forged body (HRC50±2) for long life



DIMENSIONS

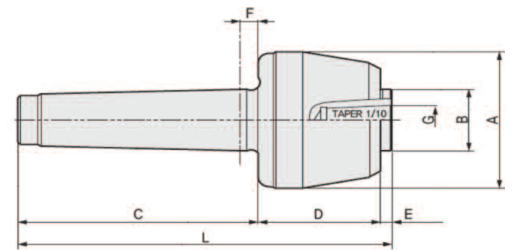
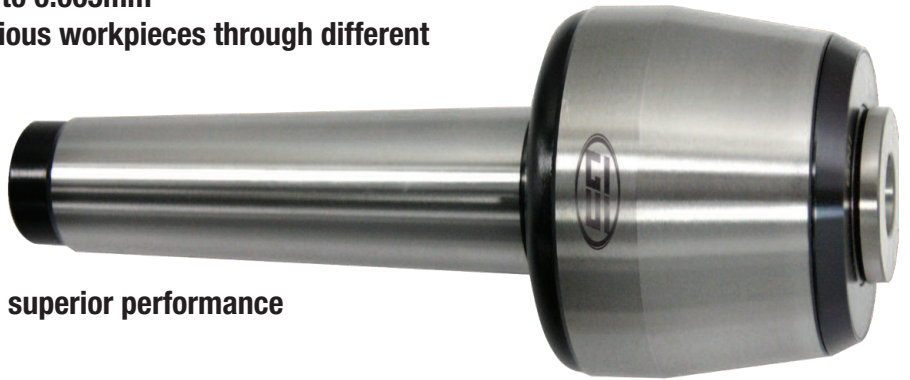
MT	A (mm)	B (mm)	C (mm)	D (mm)	E (mm)	F (mm)	L (mm)	Workpiece Weight	Max RPM	Weight	Max Runout	Code No.	List \$	SALE \$
3	50	20	85	58	23	4.5	166	750 kg	6,000	1.9 kg	0.002mm	311-034	657.30	460.11
4	66	30	108	71	35	5.3	214	1,300 kg	6,000	2.4 kg	0.002mm	311-026	819.50	573.65
5	80	35	136	76	38	6.3	250	2,000 kg	5,000	5.3 kg	0.002mm	311-027	863.70	604.59

INTERCHANGEABLE POINTS LIVE CENTRE

FEATURES

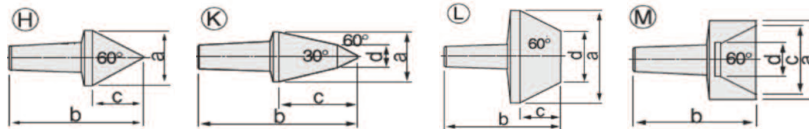
Each holder comes with the 60° H insert. Other inserts available individually (see below)

- Accuracy for centre inner diameter guaranteed to 0.003mm
- Accuracy after point locking guaranteed to 0.005mm
- Excellent for individual production of various workpieces through different insert shafts
- Heat treated point to HRC 60±2
- 4 types of standard point are available
- Quad Bearing System: a double row angular contact bearing, a radial ball bearing, and a rear needle roller bearing combine to provide excellent rigidity and superior performance
- Because of the insert shafts the allowed workpiece weight is limited
- Mounting taper of point is 1/10
- Drop forged (HRC 50±2) body
- Shaft borehole for easy, efficient dismounting



DIMENSIONS

MT	A (mm)	B (mm)	C (mm)	D (mm)	E (mm)	F (mm)	G (mm)	L (mm)	Workpiece Weight	Max RPM	Weight	Max Runout	Code No.	List \$	SALE \$
3	50	25	85	43.5	5	6	12	133.5	150 kg	5,000	0.8 kg	0.005mm	311-020	808.60	566.02
4	69	32	108	55	5	8	15	168	250 kg	3,800	1.7 kg	0.005mm	311-021	1,215.40	850.78
5	88	40	136	70	6	8	22	212	650 kg	3,000	3.9 kg	0.005mm	311-022	1,301.90	911.33



MT	Inserts	Specification				Code No.	List \$	SALE \$
		a (mm)	b (mm)	c (mm)	d (mm)			
3	H	24	51.5	20	-	311-037	252.60	176.82
	K	18	54	25	8	311-038	263.40	184.38
	L	45	51	17.5	25	311-039	305.60	213.92
	M	22	60	18	6.5	311-040	319.40	223.58
4	H	28	61.5	23.5	-	311-041	259.40	181.58
	K	26	73	36	12	311-042	327.20	229.04
	L	55	61.5	21.5	30.2	311-043	477.50	334.25
	M	40	55	35	16.5	311-044	299.70	209.79
5	H	38	78	32	-	311-045	259.40	181.58
	K	32	90	46	13	311-046	327.20	229.04
	L	70	74	20	40	311-047	477.50	334.25
	M	52	65	45	25.4	311-048	299.70	209.79

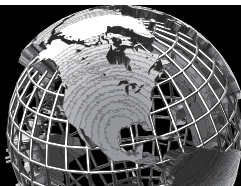




TOOLING

Distributed by:

Limited time promotional pricing effective through October 2019.



Sowa Tool & Machine Co. Ltd.
500 Manitou Drive
Kitchener, Ontario
N2C 1L3

Western Canada Branch
9649-49th Ave
Edmonton, AB
T6E 5Z5

Toll Free: 1-800-265-8221
Phone: (519) 748-5750
Fax: (519) 748-9304
sales@sowatool.com
www.sowatool.com



Canadians Supporting Canadians